



Natural Resources  
Canada

Ressources naturelles  
Canada

Canada

# Investigating Continental Boundaries

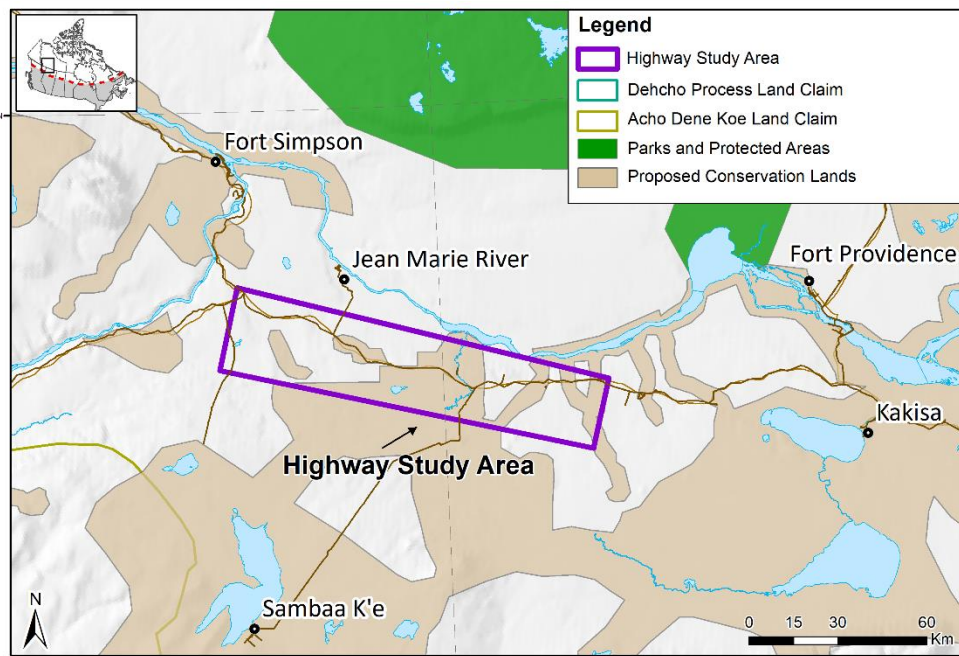
## 2025 Fieldwork along Hwy 1

**What:** Researchers from the Geological Survey of Canada and Illinois State University will be in the Dehcho region to collect samples of bedrock to analyze for micro-fossils that can tell us about the climate and how these rocks were formed millions of years ago.

**When:** Researchers will be working between August 14<sup>th</sup> and September 2<sup>nd</sup>, 2025

**How:** the team will stay at Sambaa Deh campground and use a truck to visit road cuts and exposed bedrock along the highway. They will make observations and measurements as well as use hand tools to collect bedrock samples for analysis in the lab.

**Why:** Improve our understanding of ancient climate conditions and how the bedrock in the area formed.



*Researcher recording observations at a bedrock outcrop*

Come visit us at Sambaa Deh Campground on Saturday, August 23 to see some fossils and learn more about our work! If you have any questions or concerns contact:

**Sofie Gouwy**, Research Lead, 587-583-0700 / [sofie.gouwy@canada.ca](mailto:sofie.gouwy@canada.ca)

**Tom Kingdon**, Engagement Officer, 343-550-3268 / [tom.kingdon@canada.ca](mailto:tom.kingdon@canada.ca)



Sofie Gouwy, Research