

## 2011 - 2012 Accomplishments

### The following objectives were completed:

- Bimonthly meetings of the Committee were held. In addition to six face-to-face meetings and three Working Group meetings, The Committee held ten teleconferences.
- Three working group meetings were held to address outstanding technical issues and continue review and revision of the text of the Rolling Draft.
- The zoning maps were updated in October 2011.
- Sessions to update communities on the status of the plan began in February 2012 at the request of the DFN Leadership. Four community sessions were completed.—Jean Marie River ( February 12, 2012), Nahanni Butte (March 6, 2012), Wrigley (March 7, 2012), and Trout Lake (March 13, 2012).
- The final two objectives (developing an Implementation strategy and printing the revised Interim Land Use Plan) have been deferred to 2012 - 2013.

## Financial Statement 2011– 2012

Funding provided by Aboriginal Affairs and Northern Development Canada. Total budget was \$488,415.00. Total expenditures were \$487,482.00.

### Who is on the Committee?

The committee has 2 members from the Dehcho First Nations, (DFN) one from Canada and one from the GNWT. The Chair is appointed by other members. In fall 2011, Tim Lennie and Petr Cizek resigned as the DFN members. At that time, Herb Norwegian was appointed as a DFN member. Bob Overvold represented Canada and Shannon Cumming represented the GNWT. In February 2012, Joachim Bonnetrouge replaced Michael Nadli as Chair.

### Contact Information:

Dehcho Land Use Planning Committee  
PO Box 199, Fort Providence NT, X0E 0L0  
Phone: (867) 699 - 3162  
Fax: (867) 699 - 3166  
Email: dehcholandplan@ssimicro.com

Website: [www.dehcholands.org](http://www.dehcholands.org)

## Dehcho Land Use Planning Committee 2011 - 2012 ANNUAL REPORT



Kakisa River (Proposed Conservation Zone)

Highway 1 (Special Management Zone)



Photos courtesy of DCLUP

### Chairman's Message

As the new Chair of the Dehcho Land Use Planning Committee, I have been impressed with the work that has been done by the Committee members to complete an Interim Dehcho Land Use Plan. The draft Interim Plan will assist Dehcho communities to manage resources around their communities. The few remaining issues will be provided to the Main Table to provide directions to the committee. These include zoning around Edehzhie, regulation of pipelines, regulation of public roads, provisions of *Interim Measures Agreement* relating to quarrying, prospecting permits and forest management, plan renewal clause, percentage of open crown lands and scope of plan.

It was a pleasure to travel to communities in February and March 2012 to provide updates on the draft Interim Plan. I look forward to completing the Interim Plan and the final phase of implementation.

Joachim Bonnetrouge, Chair  
Dehcho Land Use Planning  
Committee



**Mission Statement:**

The Dehcho Land Use Planning Committee will develop a land use plan as a management tool to determine what type of land use activities should occur and where they should take place. The Interim Plan will balance economic, social, environmental and cultural needs and interests. This plan will be guided by the principles of sustainable development and respect for the land as understood and explained by the Dehcho elders.

**How does Zoning Work?**

ZONE TYPE	SQ KM	PERCENT	PERMITTED LAND USES
<b>Candidate Protected Area</b>	42,432.05	23.01%	No tourism, agriculture, commercial timber development, mining, oil / gas
<b>Conservation</b>	22,803.26	12.37%	Tourism*
<b>Special Management</b>	8,766.62	4.75%	Tourism, Agriculture, Commercial Timber Development
<b>Special Development</b>	66,248.51	35.92%	Tourism, Agriculture, Commercial Timber Development, Mining, Oil / Gas **
<b>General Use</b>	44,164.62	23.95%	All
<b>TOTAL</b>	<b>184,415.06</b>	<b>100.00%</b>	
<b>Special Infrastructure Corridor</b>	2,161.84	01.17%	These overlay other zones and do not add to the percentages in other totals.

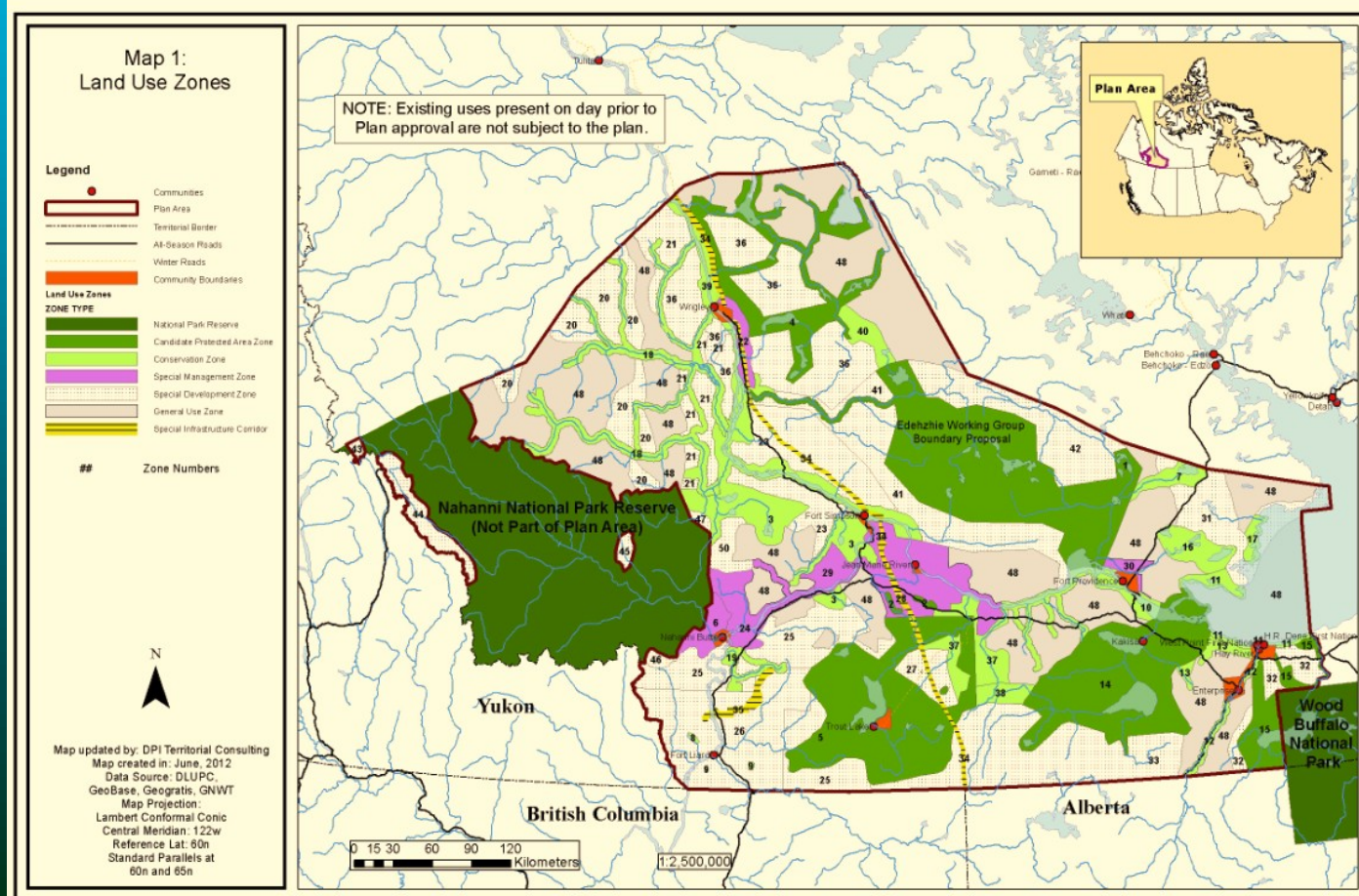
\* Except Birch Lake Conservation Zone  
 \*\* Permitted land uses must protect significant cultural and ecological features

**What is the proposed balance of lands for conservation and lands for development?**

Under the *Dehcho First Nations Interim Measures Agreement*, the plan should balance lands for conservation and lands for development. The plan should reflect Dehcho community values and priorities and take into consideration the interests of all Canadians. The current draft Interim Plan proposes the following balance of lands in the Dehcho region— 48% primarily for conservation (if Nahanni National Park Reserve is included) and 51% lands where most types of land use activities may be permitted.

**Activities since 2007**

- 45 Dehcho Land Use Planning Committee Meetings
- 14 Working Group Meetings
- 2 DFN Internal planning meetings
- 9 presentation updates to DFN Leadership and Annual Assembly
- 13 updates to Main Table negotiators
- 3 updates to Communities as specifically requested by Liidlii Kue First Nation (Fort Simpson), Dehguh Got'ie Dene First Nation (Fort Providence), and Pehdzeh Ki First Nation (Wrigley).
- 4 updates to Communities in 2012 as requested by DFN Leadership (Jean Marie First Nation, Nahanni Butte Dene Band, Wrigley - Pehdzeh Ki First Nation, Trout Lake - Sambaa K'e Dene Band).



**What is the Dehcho Interim Land Use Plan?**



The draft interim Plan proposes six types of land use zones to manage the following five key land use activities: Tourism, mining, agriculture, commercial timber development and oil/gas.

*Traditional hunting and trapping activities are not affected by the land use plan.*